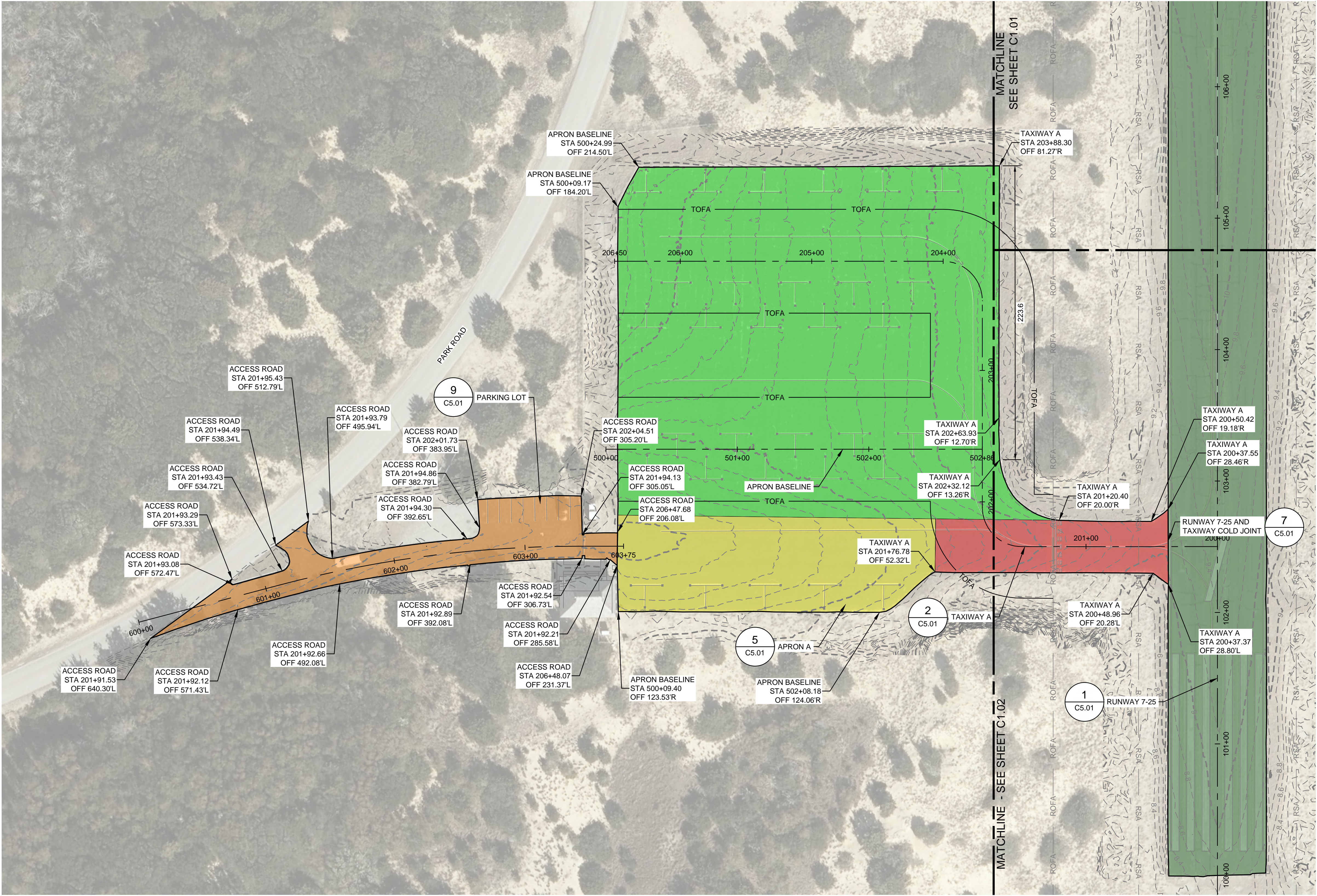


FILE NAME: OBX-HSE-C1.DWG  
PLOT DATE: Sep 13, 2024 - 4:24PM



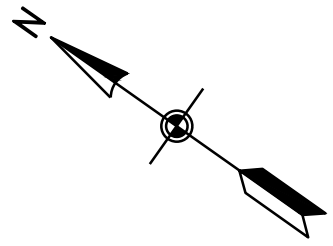
NOTES

- FOR TAXIWAY B AND APRON PAVING AND GRADING, SEE SHEET C1.03.
- FOR RUNWAY AND TAXIWAY A EXISTING TYPICAL SECTIONS, SEE SHEET CD5.01.
- SEE SHEETS C5.01 AND C5.02 FOR PAVING DETAILS.
- STATION AND OFFSET IS PROVIDED FOR REFERENCE. CONTRACTOR TO USE EXISTING PAVEMENT LIMITS AS THE LIMITS OF WORK.
- PAVEMENT REHABILITATION TO MAINTAIN EXISTING GRADES AND GEOMETRY. CONTRACTOR TO SURVEY EXISTING PAVEMENT (INCLUDING ELEVATION) TO THE EXTENT REQUIRED TO RE-ESTABLISH THE EXISTING GRADES AND GEOMETRY DURING PAVING OPERATIONS. CONTRACTOR MUST NOT MODIFY THE EXISTING GRADES AND GEOMETRY WITHOUT THE PRIOR WRITTEN CONSENT OF THE PROJECT REPRESENTATIVE.

PRINT IN COLOR

LEGEND

	RUNWAY	1 C5.01
	TAXIWAY A	2 C5.01
	TAXIWAY B	3 C5.01
	TAXIWAY C	4 C5.01
	APRON A	5 C5.01
	APRON B	6 C5.01
	APRON C	8 C5.01
	PARKING LOT AND ACCESS DRIVE	9 C5.01



0 20' 40' 80'  
HORIZONTAL SCALE 1"=40'

KEY PLAN



1001 MOREHEAD SQUARE DRIVE  
SUITE 610  
CHARLOTTE, NC 28203  
T 704-342-5401 | www.wsp.com

NO.	DESCRIPTION	DATE

**BILLY MITCHELL AIRPORT (HSE)**

**PAVEMENT REHABILITATION PROJECT**  
NCDOT PROJECT NO. 36244.74.1.1

53262 BILLY MITCHELL ROAD  
FRISCO, NC 27936

ISSUED FOR BID



SHEET TITLE

**PAVING AND GRADING PLAN  
SHEET 4 OF 4**

DATE	SEPTEMBER 16, 2024
SCALE	1" = 40'
DRAWN BY	SSD
CHECKED BY	RDB
APPROVED BY	RDB

WSP PROJECT NUMBER 188695-05

SHEET NUMBER **C1.04**

SHEET 15 OF 26

SCALE (S) AS NOTED ON THIS SHEET ARE BASED ON A FULL SIZE 22 X 34 SHEET.